

# Atlas Industrial Park



**Storage Space Available in Rye**

**Offices and Industrial Units**

**From 500 square feet  
to 10,000 square feet**



**24 Hour Security**

**Also: -**

**Self Storage  
Containers**

**to suit all purposes  
from £25 + VAT per week**



**Call Now for Further Information**

**01797 224778**

**Harbour Road, Rye, East Sussex TN31 7TE**

## Rye Harbour Newsletter



Issue 12 Volume 4

Rye Harbour Newsletter

September 2005

Compiled By & For The Residents

### Editor's Comments

I hope you all had a glorious holiday and are back now to prepare for Christmas, as the shops would have us do.

You may not have noticed, we had a new printer last month, as they got it just right, if not a little better, I think.

You will also notice this month's issue slightly thinner than normal due to a large loss in advertising, which was impossible to replace this month due to

holidays. We should recover next month. Although still lots of interesting stuff going on and Rye Harbour Art Studio's and art featuring once again with the hope we can keep it going.

A moving appeal from Heidi Foster on pages 16 and 17 for equipment for a deprived area in Africa. This is also the last issue of the fourth year, so expect a few more changes next month as we start a fifth volume.



*Carl Bagwell (Harbour Master & Rye Harbour Lifeboat Crew doing their bit for Rye Raft Race, Sunday 21st August, more details page 6*

Next month should also feature pictures from Rye Harbour Fete and Flower Festival, which won't make this issue due to not being held till the last weekend in August.

Next month's deadline will be **Friday 16th** September.

If you are new to the village, then welcome, we hope you enjoy, and please feel free to contribute to the newsletter if you wish, or get involved with things going on in the village, always looking for fresh, good ideas and plenty of help.

### Special Features

- ♦ What's On
- ♦ Comments & Letters
- ♦ Church News
- ♦ Family News
- ♦ Tide Timetable
- ♦ Harbour Masters Report
- ♦ Local Bus Times
- ♦ Sailing Club
- ♦ Shop Times
- ♦ Nature Reserve
- ♦ Fishing News
- ♦ Neighbourhood Watch Update
- ♦ Rye Harbour Art Studios
- ♦ Parent & Toddler
- ♦ Rye Raft Race Details Inside
- ♦ Village Hall
- ♦ The Enchantress
- ♦ New Bus Service
- ♦ Photographic Exhibition
- ♦ Africa Appeal
- ♦ Jumble Sale

# RYE HARBOUR NEWSLETTER

Editor - Marcus Whitaker  
 Design - Marcus Whitaker  
 Photo's - Marcus Whitaker  
 Advertising - Marcus Whitaker  
 Printing - Sarum Graphics 01722 324733  
 Distribution - Marcus Whitaker

## New Advertising Rates

### From Issue 1 Volume 3

Full Page £25.00  
 Three Quarter Page £20.00  
 Half Page £15.00  
 Quarter Page £10.00  
 Eighth Page £ 5.00  
 Back Page Add On £20.00  
 Inside Front or Back Page Add On £10.00  
 Initial Artwork Charge Of £10.00  
 If Required, Unless Otherwise Agreed  
 All artwork done in colour  
 will remain in colour on the  
 Web Site: [www.ryeharbour.org](http://www.ryeharbour.org)

# RYE HARBOUR NEWSLETTER

Office: 01424 814249  
 Mobile: 07890 385332  
 E-Mail: [ryeharbournews@ic24.net](mailto:ryeharbournews@ic24.net)  
 Or The Post Box At The Rear Of  
 Rye Harbour Stores

Views and opinions that are expressed in this magazine, are not necessarily those of the Editor or named contributors. To the best of my knowledge all the details are correct at the time of going to press and I regret that I cannot be responsible for any alterations or cancellations. I claim copyright for everything in this publication. There can be no reproduction of any article without prior written permission from the Editor.

## Contents

Item	Page
Editors Comment	1
Advertising Rates	3
New Shop Times	4
Community Transport	4
Harbour Master's Chair	6/7
The Enchantress	8
Village Hall Hire	10
General Information	10
Local Tide Times	10
Local Bus Times	11
Neighbourhood Watch	14/15
Harbour Watch	15
Homabay School Appeal	16/17
Nature Reserve Report	18/19
Age Concern	19
What's On	20
Coastal Currents Art Festival	22/23
Photographic Exhibition	25
Fishing News	26
Rye Sea Cadets	26
Appeal For Help	27
Rye Harbour Sailing Club	28/29
Jumble Sale News	29
Age Concern	30
Registered Childminders	30
Rye Harbour Church News	31
Parent & Toddler	32/33
Rye Harbour Web Site	33
Family Announcements	34
Hospital	34
Thank You	34
New Bus Service	34
Ploughman's Lunch	34



**Ellis Bros.**

# (Funeral Services) Ltd.

THE OLD FIRE STATION, 3 FERRY ROAD, RYE. Tel. 01797 222394

Funerals, Memorial Monuments arranged

Private Chapel of Rest

Golden Charter Prepaid Funeral Plans

At any hour Mrs Jackie Richards, Mr. Michael Howard

# Croft GlasS

GLASS & GLAZING CONTRACTORS

"the one-stop glass & window shop"

From the repair of a broken window  
to a new uPvc conservatory...



...new windows and doors to  
fascias, soffits and cladding...

...repairing double-glazed units  
as well as church leaded lights!

ALL THIS UNDER  
ONE ROOF PLUS  
SO MUCH MORE!

24hr  
EMERGENCY  
SERVICE

FENSA  
Registered Company

Head Office:  
92-98 Beaconsfield Road  
Hastings, East Sussex

FREE DELIVERY  HASTINGS 436776  FREE SURVEYS



## Rye Harbour Stores

### Opening Times

Mon - Fri 7.30am - 5.30pm

Saturday's 8 am to 5.30 pm

Sunday's 9 am to 5.30 pm

Don't Forget To Order  
Your Chickens



## Soft Furnishings

Hand made Curtains,  
Cushion, (boat bunk bed covers)  
Blinds, some alterations...

### Changing the Interior Look

In home, CARAVAN or office?!

Choosing colours?

For help ring 01797 - 223970

(based in Rye Harbour)



## VICTORIA TYRE CENTRE



**MARANGONI**  
tyre

LONG LIFE FOR YOUR TYRES WITH MARANGONI TYRE  
GLOBAL WARRANTY

- HUGE STOCK OF NEW CAR & 4x4 TYRES
- PUNCTURES
- WHEEL BALANCING
- TRACKING

OPENING HOURS 8.30 - 5.00 MON - FRI 8.30 - 1.00 SAT

**TELEPHONE: 01424-460838**

162 VICTORIA AVE HASTINGS EAST SUSSEX



## RYE & DISTRICT COMMUNITY TRANSPORT

A Company Limited By Guarantee  
Reg. Charity Number 1079421

### GROUP TRANSPORT FOR CLUB OUTINGS

**DIAL - A - RIDE**  
FOR PEOPLE WITH  
MOBILITY PROBLEMS

**ALL ENQUIRIES**  
**227722**

## RYE HIRE

1 CYPRUS PLACE, RYE  
Tel. 01797 223033

*We hire a wide range of equipment,  
& sell building materials,  
cycle spares, etc. and repair/service most  
makes of tools and  
garden equipment.  
Stockists of British Gas Butane  
& Propane Bottles*

Member of Hire Association Europe

## RYE CLEANERS

MARKET ROAD TEL. 01797 224779



FULLY FINISHED LAUNDRY AND DRY  
CLEANING

BAG WASH SERVICE

(washing by weight)

REPAIRS & ALTERATIONS

*EXPRESS SERVICE AVAILABLE*

# RYE LINENS

**8 - 10 FERRY ROAD, RYE, TN31 7DN**

Phone 01797 229119

Fax 01797 229121

Web: [www.rye-tourism.co.uk/ryelinens](http://www.rye-tourism.co.uk/ryelinens)



*Suppliers of Good Quality*

**HOUSEHOLD  
LINENS**



**HANKERCHIEFS  
& GIFT IDEAS**

**Health Authority Registered**

**99% PAIN FREE TATTOOS AVAILABLE**

PRIVATE FACILITIES  
AVAILABLE

Over  
50,000  
Designs

**JD's**

Cover  
up  
Specialist

*Tattoo and Piercing*  
OPEN 7 DAYS - NO APPTS

**01797 223732**

23 Cinque Ports St. Rye

## FROM THE HARBOUR MASTERS CHAIR

A new arrival. "Kirk" McGregor has joined us as Deputy Harbour Master, he has taken up his role with vigour visiting many parts of the harbour and meeting people who either work by the river or just enjoy sailing or walking its tributaries. Kirk has a "Deep Sea" background recently serving as master on a container ship in the far east. I'm sure we all wish him well in his new shore based post. Another new appointment albeit at a distance, is the head of recreation and Navigation. Julia Simpson, based at head office, Bristol, spent a day at the harbour acquainting herself on the workings of a multi-functional harbour. We were able to show her at first hand commercial shipping activities. This was followed by a trip around the harbour by boat, inspecting navigational aids and viewing the developing fish market site. Another visitor was the 80's icon singer "Sade", (song: "Smooth Operator" amongst others). She attended for a photo shoot on Camber Sands in aid of breast cancer. The old tram shed next to the harbour office has now been supplied with mains electricity. In order to connect the supply



ours was switched off, during this time we were able to start up the emergency generator which is very noisy, disruption lasted for about 4 hours. Rye Trafalgar 200, what a great day. Those of you who



visited Rye could not help but see the large number of craft, fully dressed with signal flags, moored to both banks. The Cinque Ports volunteers were there together with representatives of the "Scout" car association. The whole day was completed by a flying display by a number of "Tiger Moths". Late news, the event was so popular it may be repeated

next year with the date of August 15<sup>th</sup> pencilled in (Midday high tide). 'Raft Race this year moved again back up the river, starting at Scots Float Sluice and finishing at the Road Bridge. Some ten rafts entered the "race" with the early leaders gaining a good head start on the rest of the pack. The leading raft, fitted with masts reached the first rail bridge and none of us thought

it would get under, it did less the masts! The event passed off without any rowdiness or trouble. A tribute to the Lions and Bonfire Boys who took much effort in arranging and policing the day. Well Done. The whale exercise took place on Camber Sands as first mentioned in previous notes. The two "Rubber" whales

(Continued on page 7)

## Harbour Master's Comments Cont.

(Continued from page 6) were very life like and members of the public walking Camber Sands thought they were genuine and offered to help. Some 40 persons were involved in the exercise keeping the "Whales" wet and moving them if breathing became difficult. I am assured that they had a good day and were "Well Pleased". Some of you who watch day time TV will know of the

including the Russian vessel "Saymenskiy Kanal" Coming in at a tad over 82 metres, the vessel carried a crew of 11 and arrived from Raynes quarry, north Wales with 1900 tons of road stone. Other vessels have included cargoes of Talcon powder for Ryecon Shipping who are based on the Harbour Road. Jet Skis. You hate "em or Lov'em. generally these personalised water craft launch

and collision regulations. Custodial sentences are now available to courts for the more serious offenders. Burial at sea has always been a traditional means of departing mariners and those who have derived a living from the waters around our coast. There are two locations permitted to be used as burial grounds, one off Cornwall and the other off the Isle of Wight. Not any more, perhaps after a second body had been washed up ashore on a beach on the Island. The coroner concluded that these bodies had been buried in the deeps but ill made coffins had broken up discharging their cargo to the surface. Lastly, an MP has urged the government to investigate the competencies and skills of the coastguard agency after a TV program questioned the operation and staff shortages of the Maritime and Coastguard Agency.

I hope the government responds positively as we all want the best advice and operation of the coastguard when dealing with emergencies off our port.



program "Art Attack". Well this group are coming to Rye to film on the tarmacadomed area at the Strand Quay Rye for whole day. The program involves "Laying out" differing materials over a 300 metre square area and when viewed from above an unusual picture is formed, yet again Rye will be on the big screen. A number of large vessels have arrived during the month

from the slipway and proceed to sea, they are not permitted into the town. Legislation for these things has been difficult in the past as they have no specific identity. Not any more, Salisbury Crown court has decided that these PWC's are now "ships" and therefore come under the "Merchant Shipping Acts". This means they must keep a lookout and obey the steering

**CARL BAGWELL**  
Captain  
Harbour Master



# THE ENCHANTRESS

**M**any happy

returns and a happy 200<sup>th</sup> anniversary. The Martello Tower along with the other remaining Martello Towers along the coast from Suffolk to

Seaford are 200 years old around this time and we wish them well for the future. Our own tower here in Rye



*Ship Cottage*

Harbour is number 28 and was christened 'The Enchantress'. The original purpose for their being built was as a defence against an invasion by Napoleon, a very real threat at the time. But the battle of Trafalgar effectively stopped the threat and so the towers were redundant in some cases before completion.

Whilst the 'Enchantress' is one of the oldest buildings in the community, it is probable that Ship Cottage formerly 'The Ship Inn' is, along with The



*The Enchantress*

Watch House and Harbour Lights are two to three years older. All of them would have been close to the shoreline of the day.

No doubt The Ship Inn did a roaring trade with the hundreds of artisans and labourers engaged in the building of Enchantress. Probably there was an encampment close by,



*The Watch House*

where workers and families lived; wives and children would have also been employed in one way or another.

Time does not permit me to write further on the early years except to say,

that the Enchantress was used as a lock up by the Coast Blockade for those caught smuggling and later in the 19<sup>th</sup> century there was a small platoon of The Royal Artillery who maintained the cannon and other

armaments.

Later on it appears to have been used as a private dwelling and with The Cambridge Mission, who provide holidays for poor children from London. In World War 2 The Royal Observer Corps maintained an observation post with several Rye Harbour men in the corps.

In the near future I would like to see, Enchantress become a maritime heritage centre and centre for Rye Harbour Nature Reserve.

I hope that my vision along with others will come to fruition in due course. Meantime 'Many Happy returns Enchantress'.

Michael Alford



*Harbour Lights*



**FRENCHMAN'S BEACH CARAVAN PARK - RYE HARBOUR**

**OPEN NOW TO ALL**

**All your meals catered for  
From Full Roast to Fish & Chips  
All Day Breakfast  
Salads & Sandwiches & Snacks  
Vegetarian Options**

**Also**

**Cream Teas - Hot & Cold Drinks - Homemade Cake  
Served Fresh To Eat In Or Takeaway**

**SUNDAYS ONLY**

**Eat As Much As You Can  
CARVERY FROM MIDDAY**

**Including**

**Beef, Lamb, Pork, Turkey, Chicken  
Plus Vegetarian Options  
All For £6.95 including Dessert**

**OPENING TIMES**

**Sun - Thurs 8.30 till 8pm  
Friday's & Saturday's 8.30 till Midnight**

**CHILDREN'S PARTIES CATERED FOR**

**Also available at The Lobster Pot,  
Winchelsea Sands Caravan Park, Winchelsea**

## Hire The Village Hall



If you would like to book the Village Hall for a party or some other gathering then visit the web site at [www.ryeharbourvillagehall.co.uk](http://www.ryeharbourvillagehall.co.uk). You will be able to view hall availability and other information relating to the Village Hall. The hall can be hired for £4 per hour for Village residents and £7 per hour for non-Village residents, commercial bookings and organisations; these rates include: heating, lighting, kitchen facilities etc.. If you don't have access to the internet and would like to book the hall, you can phone 01797 223631. Don't forget, a deposit is needed to guarantee your booking.

## General Information

### Local Tide Times

#### SEPTEMBER Rye Harbour Approaches

Add 1 hour for British Summertime

Date	Time	O.D. Metres	Time	O.D. Metres
1 Th	0957	2.8	2226	2.7
2 Fr	1036	3.1	2258	3.0
3 Sa	1108	3.3	2326	3.2
4 Su	1139	3.4	2354	3.2
5 Mo	—	—	1207	3.4
6 Tu	0019	3.2	1232	3.4
7 We	0043	3.2	1256	3.4
8 Th	0105	3.3	1322	3.4
9 Fr	0132	3.3	1352	3.4
10 Sa	0207	3.2	1430	3.1
11 Su	0249	2.7	1518	2.6
12 Mo	0347	2.1	1638	2.0
13 Tu	0550	1.8	1843	2.0
14 We	0730	2.1	2008	2.4
15 Th	0840	2.6	2115	3.0
16 Fr	0937	3.2	2209	3.4
17 Sa	1025	3.7	2257	3.8
18 Su	1109	4.0	2337	3.9
19 Mo	1150	4.3	—	—
20 Tu	0014	3.9	1228	4.3
21 We	0048	3.8	1305	4.2
22 Th	0124	3.7	1341	3.8
23 Fr	0201	3.3	1419	3.4
24 Sa	0242	3.0	1501	2.8
25 Su	0332	2.4	1556	2.2
26 Mo	0434	2.0	1705	1.8
27 Tu	0549	1.6	1832	1.6
28 We	0725	1.9	2024	1.9
29 Th	0839	2.4	2117	2.4
30 Fr	0926	2.7	2153	2.7

Reproduced from Admiralty time tables by permission of the controller of Her Majesty's Stationary Office & The UK Hydrographic Office.

### Flood Warnings

Floodline  
0845 988 1188

### Local Police



Your Local Police Station  
No.

0845 607 0999  
Rye Direct Line  
01424 456078

### Citizens Advice

Tuesdays 10.30 am - 12.30 pm  
Tuesdays 1.30 pm - 3.30 pm  
No Appointment Necessary  
Wednesdays 2.00 pm - 4.00 pm  
Appointments Necessary  
Rye Partnership Office (Rye)  
01424 215055 / 734549  
Or you may telephone, on 0870 1264101  
7 Days a Week - 24 Hours a Day



## Local Bus Times



### Mondays to Saturdays only (excluding Bank Holidays) 325

Route No.	325	344	325	345	325	325	325	325	325	325	325	325	325	325	345	325	325	344
Operator	J&H	CO	CO	CO	CO	CO	CO	CO	CO	CO	CO	CO	CO	J&H	CO	CO	CO	SH
Day Code	Ⓟ	Ⓟ	Ⓟ	Ⓟ	Ⓟ	Ⓟ	Ⓟ	Ⓟ	Ⓟ	Ⓟ	Ⓟ	Ⓟ	Ⓟ	Ⓟ	Ⓟ	Ⓟ	Ⓟ	Ⓟ
Freda Gardham School	...	...	...	...	...	...	...	...	...	...	...	...	...	1520	1520	1520	...	...
Rye (Rail Station) ⇌	...	...	...	...	...	...	...	0948	1048	1148	1248	1348	1448	1525	...	...	1648	...
Tilling Green	...	...	...	...	...	...	...	0853	0953	1053	1153	1253	1353	1453	1530	1530	...	1663
Rye (Rail Station) ⇌	...	...	...	...	...	...	...	0859	0959	1059	1159	1259	1359	1459	...	...	1546	1659
Rye Harbour	...	...	...	...	...	...	...	0907	1007	1107	1207	1307	1407	1507	...	...	1532	1654
Rye (Rail Station) ⇌	...	...	...	...	...	...	...	0918	1018	1118	1218	1318	1418	1515	...	...	1540	1651
Cadborough Cliff	...	...	...	...	...	...	...	...	...	...	...	...	...	...	...	...	...	...
Tilling Green	...	...	...	...	...	...	...	...	...	...	...	...	...	...	...	...	...	...
Rye (Rail Station) ⇌	...	...	...	...	...	...	...	0923	1023	1123	1223	1323	1423	...	...	...	1608	...
Rye Harbour	...	...	...	...	...	...	...	0929	1029	1129	1229	1329	1429	...	...	...	1629	1719
Rye (Rail Station) ⇌	...	...	...	...	...	...	...	0937	1037	1137	1237	1337	1437	...	...	...	1637	1727
Freda Gardham School	...	...	...	...	...	...	...	0943	1043	1145	1245	1345	1445	...	...	...	1645	1735
Thomas Peacock School	...	...	...	...	...	...	...	...	...	...	...	...	...	...	...	...	...	...

### Mondays to Fridays only (excluding Bank Holidays) 326

Service Number:	326	326	326	326	326	326	326	326	326	326	326	326	326	326	326	326	326	326	326
Rye (Rail Station Approach) ⇌	...	...	...	...	...	...	...	...	...	...	...	...	...	...	...	...	...	...	...
High Street (The George)	...	...	...	...	...	...	...	...	...	...	...	...	...	...	...	...	...	...	...
Rye (Rail Station Approach) ⇌ arr	...	...	...	...	...	...	...	...	...	...	...	...	...	...	...	...	...	...	...
Rye (Rail Station Approach) ⇌ dep	...	...	...	...	...	...	...	...	...	...	...	...	...	...	...	...	...	...	...
Cadborough Cliff	...	...	...	...	...	...	...	...	...	...	...	...	...	...	...	...	...	...	...
Rye (Rail Station Approach) ⇌ arr	...	...	...	...	...	...	...	...	...	...	...	...	...	...	...	...	...	...	...
Rye (Rail Station Approach) ⇌ dep	...	...	...	...	...	...	...	...	...	...	...	...	...	...	...	...	...	...	...
Rye (Memorial Care Centre)	...	...	...	...	...	...	...	...	...	...	...	...	...	...	...	...	...	...	...
Playden (Peace and Plenty)	...	...	...	...	...	...	...	...	...	...	...	...	...	...	...	...	...	...	...
Houghton Green	...	...	...	...	...	...	...	...	...	...	...	...	...	...	...	...	...	...	...
Military Road	...	...	...	...	...	...	...	...	...	...	...	...	...	...	...	...	...	...	...
Kings Avenue	...	...	...	...	...	...	...	...	...	...	...	...	...	...	...	...	...	...	...
Rye (Rail Station Approach) ⇌	...	...	...	...	...	...	...	...	...	...	...	...	...	...	...	...	...	...	...

#### Explanation of Codes:

NS: Not on Saturdays  
S: Saturdays Only  
N: Not School Days & Saturdays  
⊕: School Days Only  
R: Operates via Rye Harbour at 1807  
T: Operates via Rye Harbour at 0820

### Mondays to Saturdays only (excluding Bank Holidays) 344

Route No.	344	344	344	300	344	344	344	344	344	344	344	344	344	344	344	344	344	344
Operator	SC	CO	CO	CO	CO	CO	CO	CO	CO	CO	CO	CO	CO	CO	CO	CO	CO	SC
Day Code	NS	⊕	⊕	N⊕														
Northiam (Coppards Lane)	...	0720	0720	0730	0800	...	0930	1030	1130	1230	1330	1430	1441E	1530	1630G	1730		
Northiam (Goddens Gill)	...	0721	0721	0731	0801	...	0931	1031	1131	1231	1331	1431	1442	1531	1631	1731		
Bockley (Rose and Crown)	...	0725	0725	0735	0805	...	0935	1035	1135	1235	1335	1435	1446	1535	1635	1735		
Bockley (Four Oaks)	...	0728	0728	0738	0808	...	0938	1038	1138	1238	1338	1438	1449	1538	1638	1738		
Peasmarsh (Old Post Office)	...	0733	0733	0743	0813	...	0943	1043	1143	1243	1343	1443	1454	1543	1643	1743		
Playden (Peace and Plenty)	...	0738	0738	0748	0818	...	0948	1048	1148	1248	1348	1448	1459	1548	1648	1748		
Rye (Rail Station) ⇌ arr	...	0745	0745	0755	0825	...	0955	1055	1155	1255	1355	1455	1506	1555	1655	1755		
Rye (Rail Station) ⇌ dep	...	0751	0751	0756	...	0859	0959	1059	1159	1259	1359	1459	...	1559	1659	1759R		
Winchelsea (Bridge End)	...	0757	0757	B	...	0905	1005	1105	1205	1305	1405	1505	...	1605	1705	1816		
Winchelsea (Beach)	...	0800	0800	...	...	0908	1008	1108	1208	1308	1408	1508	...	1608	1708	1819		
Winchelsea (Smugglers End)	...	0802	0802	...	...	0910	1010	1110	1210	1310	1410	1510	...	1610	1710	1821		
Pett Level	...	0806	0806	...	...	0914	1014	1114	1214	1314	1414	1514	...	1614	1714	1825		
Fairlight Cove (Hotel)	0730	0812	0812	...	...	0920	1020	1120	1220	1320	1420	1520	...	1620	1720	1832		
Fairlight Glen	0736	0818	0818	...	...	0926	1026	1126	1226	1326	1426	1526	...	1626	1726	1836		
Ore (Christ Church)	0739	0821F	0821	...	...	0929	1029	1129	1229	1329	1429	1529	...	1629	1729	1841		
Hastings (Boating Lake)	0745	0840	0827	...	...	0935	1035	1135	1235	1335	1435	1535	...	1635	1735	1847		
Hastings (Harold Place)	0747	0842	0829	...	...	0937	1037	1137	1237	1337	1437	1537	...	1637	1737	1849		
Hastings (Rail Station) ⇌	0749	0843	0831	0845	...	0939	1039	1139	1239	1339	1439	1539	...	1639	1739	1851		

### Mondays to Saturdays only (excluding Bank Holidays) 346 / 347

Operator:	RC	RC*	EMP*	EMP*	EMP*	RC*
Service Number:	347	347	346	346	346	347
Days of Operation:	⊕	⊕	⊕	⊕	⊕	⊕
Pett (Chick Hill)	...	...	...	...	...	...
Pett (Church)	...	...	...	...	...	...
Guestling (School)	...	...	...	...	...	...
Guestling (White Hart)	...	...	...	...	...	...
Ore (Kings Head)	...	...	...	...	...	...
Ore (Christ Church)	...	...	...	...	...	...
Hastings (Baldslow Rd)	...	...	...	...	...	...
Hastings (Safeway)	...	...	...	...	...	...
Hastings (Queen's Road)	...	...	...	...	...	...
Hastings (Harold Place)	...	...	...	...	...	...
Hastings (Rail Station) arr ⇌	...	...	...	...	...	...
Hastings (Rail Station) dep ⇌	...	...	...	...	...	...
Priory Avenue (Linton Road)	...	...	...	...	...	...
Amherst Road	...	...	...	...	...	...
Silverhill (Battle Road)	...	...	...	...	...	...
Upper Church Road	...	...	...	...	...	...
Sainsbury's Superstore	...	...	...	...	...	...
Ashdown House	...	...	...	...	...	...
Little Ridge (Hare Way)	...	...	...	...	...	...
Conquest Hospital (Grounds)	...	...	...	...	...	...



Budgens at Rye has everything you need - fresh fruit & vegetables, fresh meat, poultry & fish, fresh dairy produce, an instore bakery, a wide range of groceries, flowers, wines and home delivery.

Opening hours:  
Mon - Sat 8am-10pm,  
Sun 10am - 4pm  
Station Approach,



### Departments

- Fresh Fruit & Vegetables
- Chilled Salads & Prepared Vegetables
- Fresh Meat, Poultry & Fish
- Fresh Dairy Produce
- Hot Food
- Instore Bakery
- Wines
- Groceries
- Delicatessen
- Tastes of Sussex local product range
- Newspapers & Magazines

### Services

- Home Delivery (Mon - Fri)
- E-Top Up
- National Lottery
- Free Parking
- Savings Stamps
- Free Taxi Call
- Gift Vouchers
- Phonecards & Stamps

[www.budgens.co.uk](http://www.budgens.co.uk)

**BUDGENS**  
Crownfields, Rye

*Helping you shop locally*

# The M.O.T. Centre

01797  
223606



HARBOUR  
ROAD  
RYE  
EAST SUSSEX  
TN31 7TE

Phone: 01797 223606

Fax: 01797 229888

Email:

[themotcentre@tiscali.co.uk](mailto:themotcentre@tiscali.co.uk)

**MOT's £30**  
**Free retest if**  
**within 7 days.**

**Motorbike**  
**MOT's**

**All makes of cars and**  
**vans serviced.**

**\*Clutches\* \*Brakes\***  
**\*Cambelts\* \*Exhausts\***  
**\*Head Gaskets\* \*Tyres\***

**All MOT repairs**  
**carried out**  
**including Welding.**

**Opening Times**  
**Monday—Friday**  
**8am—6pm**  
**Saturdays**  
**8am-3pm**



By E-Mail

## NEIGHBOURHOOD WATCH



RYE POLICE STATION

### Station Approach, Rye

Witnesses are being sought as part of an ongoing investigation into a disturbance involving a group of youths which took place on the evening of Wednesday 20th July at Budgens in Station Approach, Rye. Police were called and one youth was arrested for multiple offences including assault, public order, resisting arrest and possession of an offensive weapon. Witnesses are asked to contact PC Berry at Rye on 0845 60 70 999.

### Elderly man conned out of £3,000 savings

Heartless bogus callers conned a partially sighted 93-year-old man out of £3,000 on Tuesday 16 August.

The offenders involved were a man and two women who also had a young child with them. The victim was driven from his home in Camber to first Hastings and then Bexhill to find a bank where he could withdraw the money. He was then dropped off in Rye and given a few pounds to catch a bus home.

The mean crime took place when a man called at the elderly victim's home in Lydd Road between 10:00 and midday apparently claiming to be his next door neighbour. He stated that he needed some cash for some work he was going to carry out for the victim. He was allowed inside and was joined by a woman claiming to be his wife. They persuaded the pensioner to call his bank for authorisation for him to draw out £3,000 in cash for the work they were going to carry out. Whilst in the property they also stole some money from his wallet. The couple then escorted him outside where it is believed they had a light coloured 4x4 vehicle waiting on the pavement. Inside the vehicle in the rear was a second woman and a child believed to be aged five to seven.

They all drove to Hastings where the aggrieved was dropped off in a bus lay-by in the town centre while they parked their vehicle. He was joined by the man who escorted him up and down Queens Road in search of the Alliance and Leicester. The conman, who was not wearing any clothes on his top half, stopped several members of the public to ask if they knew where the building society was until one informed him that the branch in Hastings had closed down and the nearest branch was in Bexhill. They all drove to Bexhill where the pensioner was dropped outside the Alliance and Leicester in Devonshire Road at around 13:00 and instructed to get the £3,000 in cash for the work they were claiming they would carry out.

He withdrew the cash in £50 notes and met one of the women outside. After handing over the money he was driven back to Rye where he was dropped off some four miles away from his home by the offenders who claimed they were going to get the items needed to carry out the work and gave him a few pounds so he could get a bus home.

Later that day the pensioner discovered that the man and woman were not connected with his neighbours and he had been deceived out of his savings.

Police are appealing for witnesses to the incident. The man involved is described as white, tall and wearing no clothes on his top half.

Rother CID urgently wants to hear from anyone with information which might help us track down those responsible.

Were you in Hastings town centre on Tuesday morning and asked where the Alliance and Leicester was by an elderly man and a man with no shirt on?

## NEIGHBOURHOOD WATCH Cont...

Were you in Devonshire Road, Bexhill, at lunchtime on Tuesday and maybe saw the elderly man being dropped off or met outside the Alliance and Leicester? Or perhaps someone with a large amount of £50 notes purchased goods from you later that day.

If you have any information regarding this incident please contact Rother CID on 0845 60 70 999.

Quote serial 1740 of 16/08/05 or contact Crimestoppers anonymously on 0800 555 111.

### Neighbourhood Watch Search Team

Thanks to all those who attended last night's meeting regarding a Neighbourhood Watch Search Team. The meeting was very positive and generated interest from those who did attend. The West Downs Search Team was well represented and PC Jason Ede gave an interesting view of the work involved.

We are looking to start up a steering group of approximately half a dozen people who would be willing to sit on the committee and organise the search team. We have a few interested parties but if you feel this is something you would like to become involved in then please contact me, Becky Forte on [rebecca.forte@sussex.pnn.police.uk](mailto:rebecca.forte@sussex.pnn.police.uk)

Once a steering group is established we will look to recruiting members to join the team. I hope we are able to call on our Neighbourhood Watch colleagues to take this project forwards. Members of the steering group and search team must be Neighbourhood Watch members.

### PPI Forum - Rother Meeting in Public

To be held at Battle Baptist Church, Mount Street, Battle on Thursday 15th September 2005 at 10am

A senior manager of the Bexhill and Rother PCT has been invited to give a presentation with regard to the proposed changes to the structure of Primary Care Trusts in Sussex and Surrey.

To find out more about the Patient and Public Forum - Rother or becoming a member: Contact: Clive Mills 01424 777163 E. MAIL: [clive.ppi@fsmail.net](mailto:clive.ppi@fsmail.net)  
Or visit: [www.maketimeforhealth.org](http://www.maketimeforhealth.org)

### SUSSEX POLICE

In an emergency dial 999

For all other calls use 0845 60 70 999. If responding to a NHW by e-mail message please quote the Serial No. and date or the Crime Reference No.

Crimestoppers: 0800 555111 Information about any type of crime can be given anonymously on this number. Trading Standards: 01323 418200

Hastings Borough Council ASBO (Anti Social Behaviour Order)

Helpline: 0800 783 6084

Rother Antisocial Behaviour Co-ordinator: 01424 456160

### Harbour Watch

Do you want to be kept up to date with Neighbourhood Watch information about crime prevention advice and issues relating to your area.

Then why not subscribe to this free service to receive this information by e-mail, either at work or at home.

It's as easy as sending an e-mail to [HarbourWatch-owner@yahoo.co.uk](mailto:HarbourWatch-owner@yahoo.co.uk) to join. Please make sure that the subject reads 'SUBSCRIBE'.

If you would like to receive the NHW information at a different e-mail address, then include this in the message body.



# HOMABAY SCHOOL APPEAL

Some of you may know me, or heard my name mentioned. I moved from London into the Harbour in November 04. It was somewhat of a culture shock but I love it here. Apart from the beautiful environment, friends, other Harbour inhabitants have made me feel welcome.

I need your help. I support an orphan village in Kenya and will be visiting in October. Parents of these



communities who need it most. The recent G8 decisions and concert, which has raised yet more millions, be sure, will also NOT make a difference to many villages that are suffering.

However what we are not told about, are the many Africans who try, even in adversity, to be innovative, socially conscious and share the little they have with the more unfortunate around them.

My African friends have started a school for 50 children who are orphans and from poor families, unable to send siblings to a proper school. The problem is they have no resources, chairs or desks.

I have sent money for the furniture, I am appealing to your better

children have died of poverty, Malaria, HIV/ Aids and lack of education and medicine. No doubt you'll wonder why poverty and sickness still prevails after pouring millions into Africa. Unfortunately, money, development and food aid often does not reach the small

nature, not so much for money, although still needed, but small books for ages 3-8 (paper back as I have to carry them) your children don't need any more, small educational or soft toys, colouring books and pens, bandages,

*(Continued on page 17)*



# Orphan children also love learning

*(Continued from page 16)*



wonderful and will give each child a set and sense of being at school.

When I return at the beginning of November, I will update you all on the highs and lows, no doubt, of an extraordinary community. Thank you to everyone concerned enough to help.

**Heidi Foster**

plasters and anything light you can think of, a young school child with nothing could make use of. I am grateful to Bogden for keeping a box in the shop where you can deposit anything you can spare. A local friend has kindly donated new pens, rulers, rubbers, paper etc, which is





## Rye Harbour Nature Reserve Report

With the end of a rather mixed breeding

season at Rye Harbour, many of our summer visitors have already begun their long



another batch of fledglings, excitement over what the

Practical work on the reserve has continued in the same vein, with yet more ragwort and valerian clearance, with the addition of the first

willow bashing session of the autumn at Castle Water. The wardens have also undertaken a range of fencing repairs here to prevent both goats and sheep (but especially goats!) from wandering into places where they shouldn't be!

Well the weather luckily improved just in time for our summer events. We had a good turn out for our Camber Castle Detective event held at the end of July. We had 40 children being detectives that day, and everyone went home with a prize after completing the questions that were set.



journey back to their wintering grounds in Africa. By the time you are reading this, species such as Little Tern, Wheatear and the various species of warbler will have departed, while the first of those species which are so characteristic of the reserve during the winter, such as Dunlin (right), Curlew and Wigeon will already have arrived to take advantage of the open water and shingly shores found here. This time of the year brings rather mixed - relief that our breeding birds have succeeded in getting off

autumn may bring, and not a hint of sadness that the summer is drawing to an end and the year is slowly winding down to the short, cold days of winter.



## Rye Harbour Nature Reserve Report Cont..

Our Seashore Discovery event that was held during Marine Week on 11<sup>th</sup> August was also popular, encouraging 41 children to explore the salt-marsh for creepy crawlies, and

then being shown the art of catching shrimps down on the seashore (unfortunately only one shrimp found it's way into

the net!), but crabs and numerous shells were also closely inspected. Our surprise find for the day has to go to the jellyfish which was found by some of the younger members of the group (see picture).



On Sunday 18<sup>th</sup> September why not come on our Camber Castle Wildlife and History walk. This will be a circular walk to explore Henry VIII's castle, and to see the wildlife of Castle Water. Meet at Brede Lock Car Park at 10am, returning at 1pm.

**Barry, Miriam, Chris and Sam**

## AGE Concern

**Come In Today -To Learn About**

**Aids For Daily Living**

**Which Can Help To**

**Make Your Life Easier**

**2nd and 4th Thursday**

**Of Each Month**

**10 AM to 12 Noon**

**Other Times By Arrangement**

**Please Ring 01797 270459**

**For Further Details**

## AGE Concern

Due to the increase in demand, Age Concern East Sussex require more self employed gardeners to include in their gardeners register for many parts of Rother. The gardeners agree to work for no more than £7.00 per hour for the current year. They are also required to supply two references and evidence of insurance.

If you are interested or know someone who might be, please contact the co-ordinator Age Concern East Sussex, the Almonry, High Street, Battle TN33 0EA or ring 01424 775721.



## WHATS ON - IN YOUR LOCAL AREA

### SEPTEMBER

#### COSTAL CURRENTS ART

FESTIVAL – Runs all month, brochures from the Heritage Centre.

Sat 3<sup>rd</sup>

RYE FESTIVAL – Runs till 18<sup>th</sup>

MAPP & LUCIA WALK – Meet 2pm

The Belvedere, with the telescope, eastern end of the high street. The walk ends at Lamb House which will be open for visitors.

RYE IN BLOOM FLOWER &

VEGETABLE SHOW. Held at The Community Centre. Entries from 10am, judging from 12 noon and open to public from 2pm. For further information

01797 229808

BALLROOM – SEQUENCE – LINE

DANCE – Held at Pett village hall from 7.30pm – 11pm. Tickets £4 including refreshments. Information Carole Knight 01424 813803

Sun 4<sup>th</sup>

ECHOES FROM THE SKY – A chance not to be missed to find out more about the fascinating Listening Devices, concrete ears or dishes at Lade Pitt. Meet Dr Scarth at 2pm and the Romney Marsh countryside project (01797 367934) at Lade car park on coast drive (halfway between the Pilot Pub & Romney Sands. Distance 3 miles. Donations appreciated

BIKE JUMBLE – Held at Ham Street from 10am. Details 01797 344277

VALLEYS & VISTA – A circular walk from Rye, enjoying fantastic views from over the Rye Bay. We will cross three main waterways leading to Rye, which have helped shape the landscape we see to day. There will be a pub stop on route for lunch. Pre-booking advisable 01797 226488 by

Friday 2<sup>nd</sup> Sept. Meet Rye station 9.30am.

Lamb House which will be open for visitors.

Wed 7<sup>th</sup>

MAPP & LUCIA WALK – Meet 2pm  
The Belvedere, with the telescope, eastern end of the high street. The walk ends at Lamb House which will be open for visitors.

Wed 14<sup>th</sup>

MAPP & LUCIA WALK – Meet 2pm  
The Belvedere, with the telescope, eastern end of the high street. The walk ends at Lamb House which will be open for visitors.

Sat 17<sup>th</sup>

FRIENDS OF RYE WURLITZER  
Coffee morning/Craft stalls & Wurlitzer afternoon concert with Len Rawle. Evening with Nigel Ogden & Kent Police MVC. Information 01424 444058. Held at Thomas Peacocke, Community College, Rye

MAPP & LUCIA WALK – Meet 2pm  
The Belvedere, with the telescope, eastern end of the high street. The walk ends at Lamb House which will be open for visitors.

Sun 18<sup>th</sup>

FRIENDS OF RYE WURLITZER  
Breakfast with Len at 8am To 10am. Master class. 11am – 12.15pm Morning Song of Praise with Len Rawle. 12.30pm to 1.45pm Special buffet lunch, also afternoon concert Nicholas Martin.

CAMBER CASTLE WILDLIFE &

HISTORY – A circular walk to explore Henry VIII's Castle and see the wildlife of Castle Water. Meet Brede Lock car park 10am

Wed 21<sup>st</sup>

MAPP & LUCIA WALK – Meet 2pm  
The Belvedere, with the telescope, eastern end of the high street. The walk ends at

Fri 23<sup>rd</sup>

TASTE OF RYE FESTIVAL – local food & drink until Sunday 2<sup>nd</sup> October. Details 01797 226696

Sat 24<sup>th</sup>

ANTIQUES & COLLECTABLES. Held at Rye Community Centre, Conduit hill at 9.30 – 4.30

Sun 25<sup>th</sup>

ANTIQUES & COLLECTABLES. Held at Rye Community Centre, Conduit hill at 9.30 – 4.30

RYE HARBOUR LIFEBOAT

DISTRICT – Lunch at Manor Farm Oast, Icklesham. Information, Mrs Mylrae 01424 813787. Proceeds for funds of Lifeboat.

Wed 28<sup>th</sup>

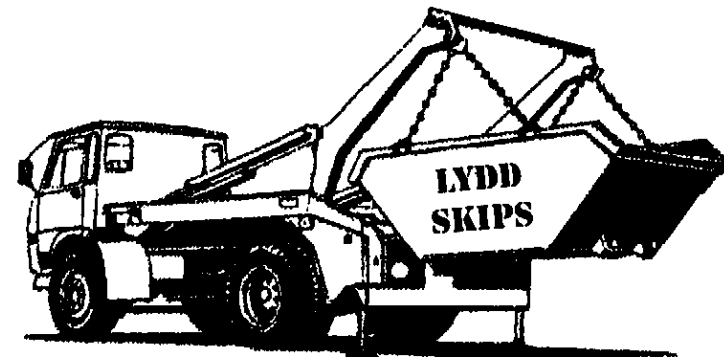
MAPP & LUCIA WALK – Meet 2pm  
The Belvedere, with the telescope, eastern end of the high street. The walk ends at Lamb House which will be open for visitors.

**Camber Castle open week-ends only  
2pm till 5pm Last entry 4.30pm**

PLEASE NOTE RYE FARMER'S  
MARKET HELD EVERY  
WEDNESDAY ON STRAND QUAY  
BETWEEN 10am – 1pm THURSDAY  
GENERAL MARKET AT  
ROPE WALK

IF YOU HAVE AN EVENT YOU  
WOULD LIKE ME TO ADD,  
PLEASE LET ME KNOW  
BEFORE DEADLINE

# LYDD SKIPS



**FRIENDLY PROFESSIONAL SERVICE**

**6 DAYS A WEEK**

**ROAD PERMITS OBTAINED**

**ENVIROMENT AGENCY REGISTERED**

**ASBESTOS PERMITS OBTAINED**

**ASBESTOS SKIPS SUPPLIED**

**PROMPT DELIVERY AND COLLECTION**

**Lydd Commercial Park, Jurys Gap Road, Lydd  
Romney Marsh, Kent TN29 9JN**

**Telephone: 01797 329288 Fax: 01797 322277**



# COASTAL CURRENTS

ARTS FESTIVAL 2005



**Rye Harbour Artists Group**  
**3 September 2005 - 11 September 2005**  
**Harbour Point, Rye Harbour**  
**Sept 3-4 & 10-11 - 10am-5pm**

As many and diverse works of art as there are artists! Atmospheric, amusing, moving, inspiring. Jewellery, etchings, photographs, paintings & pottery, prints & cards. Well worth a visit to this village and its groups of open studios and exhibitions.

**contact:**  
 01797  
 223005

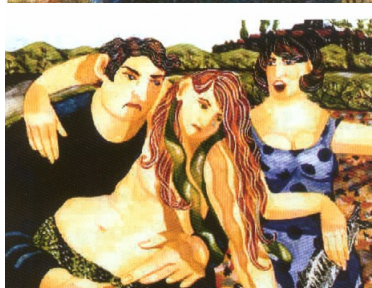


**Jill Stott**

A painters homage to seaside postcards.

**The Loft, Tram Road, Rye Harbour.**

**Sept 3-4 & 10-11 - 10am-5pm**



**Michael Stott**

Etchings on metal plates using softground and aquatint.

**Debi Angel**

Personal perspectives of evocative landscapes in 4 different mediums - watercolour, acrylics photography and collage.

**contact:** 01797 224614 - **email:** jillstott@aol.com



**Jim Spencer**

Marine landscape artist in watercolour and acrylic.

**Judy Ball**

Hand coloured limited edition copper plate etchings, specialising in wild flowers.

**Priory Cottage, Tram Road, Rye Harbour**  
 Sept 3-4 & 10-11 - 10am - 5pm

**contact:** 01797 222994  
**email:** judy@judyball.co.uk  
**email:** jim@jimspencer.co.uk

**Rye Harbour Church, Rye Harbour**

**contact:** 01424 734193 (Saffron Summerfield)

**website:** www.rachelspring.co.uk

**Saffron Summerfield**

Saffron Summerfield, Sound Artist. South Coast Sounds is a new audio-visual work created with found sounds and music inspired by the Rye Bay and Rother areas.

**Rachel Spring**

New work by Rachel Spring. Come and feel the presence of these large-scale figurative ceramic forms which are also available for purchase.

**Brigitte Evill**  
 Sculptures



**Avocet, Tram Road, Rye Harbour**

**Greenhalf & Pollard**

**contact:** 01797 223005

**website:** www.greenhalfphotography.co.uk

Using only traditional photography and darkroom techniques the artists capture the atmosphere of magical and holy places.

**Beachside, Tram Road, Rye Harbour**

**Ruth Praill**

**contact:** 01797 229 300

**email:** eezylife@supanet.com

Jewellery & metalwork in silver, gold, enamelling, semi precious, natural stones & beads. Showing new contemporary designs with lots of colour and fun!



# MARTYN CHANNON'S COUNTRY STORE

RYE CATTLE MARKET - RYE - EAST SUSSEX  
(01797) 224232 Fax (01797) 224560

*ANIMAL HEALTH PRODUCTS*

*FENCING WIRE - GATES*

*ANIMAL and PET FOOD*

*COUNTRY CLOTHING - CARTRIDGES*

*SHEARING EQUIPMENT - IRONMONGERY*

*SWIMMING POOL CHEMICALS*

Open 8.30 - 5.30 Weekdays, Saturday 9.00 - 5.00 Delivery Service

## CT AUTOS UNIT 6, SIMPSON'S YARD

**CAR REPAIRS & SERVICING**

**QUALITY SECOND-HAND PARTS**

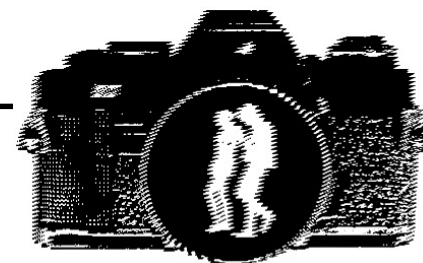


**CALL  
CHRIS  
ON**



**07818 678859 OR 07971 744263**

## RYE & DISTRICT CAMERA CLUB



PRESENT  
THEIR

## 50TH ANNIVERSARY PHOTOGRAPHIC EXHIBITION

AT THE ADULT EDUCATION CENTRE  
LION STREET, RYE

SATURDAY 10TH SEPTEMBER  
2005  
FROM 10A.M. UNTIL 6P.M.

There will be PRINTS FOR SALE  
We will also be selling 2nd hand photographic  
equipment

**AMAZING! - FREE ADMISSION**

**CAKE STALL & MORNING COFFEE**  
**FROM 10 AM 'TIL 1 PM**



## FISHING NEWS

### ROUND RYE BAY FOR MORE



August has been very uneventful for the catching side of things, with only the weather and prices for the fish helping out. Boats have been able to get to sea when they want, with a stretch of good fine weather but the catches of Dover Sole and many mixed fish have stayed on the low side. Trawlers are towing all over the bay, sometimes picking up a box or two of Cuttle fish, these mainly closer inshore, then moving further off when it gets dark, hoping for more

Soles and Plaice. Although there are patches of Spider crabs, they haven't been as abundant as other years, so not causing the problems with big bags of them for the trawlers and any set nets blinded with them. With fewer Spider crabs the netting boats are sometimes quick shooting their gear and fishing it at first light, or when tides suit, leaving it overnight till the next day without too much rubbish and crabs. Their catches haven't been high but with enough trips through the week, have managed to earn a pay of

some sorts, the biggest part of the catch being Dover Sole, without the hard wear on the gear and without the large fuel bill that is starting to make such a difference to the trawlers.

Work at the fish-market is progressing, the first phase now nearing completion, with boats perhaps using the quay next month for mooring to and unloading, then once the old stages are clear of boats, work can then carry on with the sheet piling and back filling.

Boy Ashore

## WHAT DO YOUNG PEOPLE GET UP TO THESE DAYS ?

### Just look at what they can get up to

SAILING - CANOEING - MOTOR BOATS with RYA and BCU QUALIFICATIONS - OFFSHORE YACHTS - MOTOR VESSELS and the SQUARE RIGGER 'ROYALIST'

Instruction :

Seamanship - Engineering - Clerical Work - Fieldcraft  
Duke of Edinburgh's Award Scheme

## RYE SEA CADETS

ROCK CHANNEL, RYE — Telephone 01797 224720

Mondays and Fridays 7 - 9 p.m. Boys and Girls 12 - 18 years  
Junior Section : Mondays only — Boys and Girls 10 - 12 years



## Happy Hunting Ground A Sanctuary for Pets Burial

*Please phone for full details for helpful and friendly advice.*

Little Park Farm, Hooe Road, Ninfield, Sussex

Tel: (01424) 892396

[www.pet-rest.net](http://www.pet-rest.net)

- Established in 1985
- Set in 22 acres of gardens & Woodland
- Pets individually laid to rest with dignity
- Hand carved memorials to order
- Tranquil woodland walks
- Collection service available and brochure on request.

# Angela

Medium  
Psychic Consultant

Tarot Reading  
Clairvoyance  
Divination



Tel: 01424 202576 Mob: 07899 660311

*Able to take Credit Card readings*

## APPEAL FOR HELP

Rye Harbour Youth Action Group, which organises the two youth clubs within the village, is running low on funds and is in desperate need of donations and or somebody to co-ordinate a funding application. If anyone can help in these matters and you don't have to be local, please contact Vanessa Jordan on 01797 229859, all help will be gratefully appreciated.



## Rye Harbour Sailing Club News



**S**pindrift left Rye on June 10th 13.50 hrs, setting out for Dover with some trepidation as it is such a busy port with a great deal of traffic. The initial wind was S. which soon changed to E. and we entered a squall at Dungeness and took in two reefs as the wind increased to E. F6 and progress was slow but at last we were off Folkstone by 19.55 hrs. with Dover breakwater in sight and by 20.45 hrs, we were 2 miles off Dover Harbour breakwater, still headed by a F6 wind. 21.45 hrs we had tied up in the tidal marina in Dover. Relief, it was so much easier than we had imagined. Next morning we fuelled up with diesel and left the outer harbour at 11.15 hrs. in a NE 4 wind on a 95 degree course, under full sail and with excellent visibility, which was just as well as there were container ships, fuel tankers and ferries in the vicinity. We left the shipping lane, the tide was with us, we were averaging 7.9 knots sailing beautifully Ken constantly

checking the charts to make sure we stayed in the inner channel and avoided the many sandbanks. At 18.24 hrs. we passed Dunkirk and felt very privileged to be traveling along this coastline in the 60th anniversary year of the ending of the 2nd World War. We headed for Newport, entered and tied up there at 21.00 hrs. We left with permission at 06.15hrs, in light winds crossing the busy entrance to Zeebrugge and entered the Schelde uder, a lovely blue sky which became overcast by mid-day and by 14.00 hrs strong gusts of wind made it difficult mooring up in Breskins. On the 13th. we sailed into Middelburg and met up with the other club boats. We enjoyed our stay in Middelburg which was the home of the Dutch East India company from 1610 -1798 when Napoleon occupied Holland for 70 years. There are medieval religious buildings, churches, monasteries and an ancient synagogue.

We negotiated many locks and canals until we came into Veere where we met Eric and Janet Pilkington who had come by road and were there to greet us and help us fit ourselves in. Wyn and Bill had booked us in and they were to prove our good guides for the rest of our time in Holland. They were to tease Jill Halpin about suffering from HR (Harbour Rot) as everywhere we went it was so wonderful she did not want to leave and would have stuck in one spot for ever!/? The Dutch have great cycle paths so we did lots of cycling. On the 15th. June we cycled from Veere to Veersemeere and the North Sea. We had to buy plastic ponchos to keep out the rain and the cold wind. We had dinner at the Clubhouse. There were 18 of us in 6 boats and a car. Brian Waters, Commodore, John Dawkins and Richard Mockett in Gannet. Ken (vice Commodore and Jill Halpin in Spindrift, Barry and Linda Sharp, Jean and Derek Philips in

*(Continued on page 29)*

## Rye Harbour Sailing Club News Cont...

*(Continued from page 28)*

Sommerwind. Monica and Chris in Expression. Bill and Wyn Stephens in Northern Lady. Alf Paul, Chris and another in Encounter. Eric and Janet in their Honda - they did actually sleep in a b and b! We sailed on the 16th to the island of Sabbingeplaat and tied up, having shopped for food in Middelburg and had a magnificent feast on cooked on our portable barbecues. The day was beautiful but windy but we found a wind shadow for cooking. Bill and Wyn shuttled out Eric and Janet from the nearby main island. On June 17th we sailed to Goes and stayed in a small private harbour, which is owned by a co-operative and each

member has responsibilities for running and maintaining it and there was an honesty box in the club for any drinks taken. Monica and Chris had invited us for a meal on their boat and we reciprocated. We mostly ate on board as locally bought produce was excellent and good value. We did take a liking to the raw new herring which you could buy on the streets, the locals hold them by their tails head back and swallow - we were more timid in our approach. We had very old and heavy bikes on board and decided to put them up for sale in the Goes harbour - they soon went to Barry and Linda and we bought lighter ones from Halfords which are the Dutch sit up and beg style and we have

cycled some long distances on them. Ken's crown fell off so we booked him an appointment with the dentist who thought he would manage until we were back in Rye. Somebody else left their medication behind so we tracked down a pharmacist. The Dutch are so very friendly and helpful and we felt very safe. Barry and Linda came for a cycle ride on a lovely track running alongside a canal. On the 18th the others left except for Wyn and Bill and ourselves and we had a really good long cycle to the Oosterscheldt for lunch and returned bird-watching looking for the nightingales we could hear singing. I will continue this next month.

## **JUMBLE SALE** **In Aid Of Rye Harbour Youth Club** **Saturday 20th August** **RAISED £119.65**

**Vanessa would like to thank Julie & all her helpers**  
**Everyone who donated their jumble, time and money**  
**Thank You Very Much**





## DOG GROOMING

ALL BREEDS GROOMED,  
BATHED AND TRIMMED  
by professional experienced groomer



Collection arranged

Please phone Frances for an appointment - 01797 226177 or 07711 979130

## PSYCHOTHERAPY

*A safe space to talk about current worries or personal development issues*

**FRAN LINTERN B.A.**  
UKCP Registered Psychotherapist

Discrete, Confidential Setting  
Rye Harbour

Telephone:- 0771-282-9189

## Rye & District Age Concern

Age concern is providing an Outreach Information Service in Rye  
At Rye CVS, 25 Cinque Ports Street, Rye  
On the second and fourth Thursdays of the month from 10am to 12noon

There is a wide range information available, on subjects such as benefits, residential homes, sheltered accommodation, support services, clubs, transport and many more. Age concern fact sheets are available and copies can be supplied on request.

The service aims to help older people, their families, friends and carers. Callers can drop in during the opening hours mentioned above or telephone on **01797 225466**

## REGISTERED CHILDMINDER

Has vacancies,  
very experienced  
Call Rosemarie  
now on  
01797 227473

## REGISTERED CHILDMINDER

Has vacancies,  
20 years experience  
Call now  
on  
01797 224966

## Rye Harbour Church News

Why worship God?

Most people think of worship in the services of the Church as an activity for

others who have a minority interest or they think of worship as a complete irrelevance to their own lives. Why gather on a Sunday morning to sing hymns and pray? What good does it do?

First, we come together to give thanks (that is the meaning of the word 'Eucharist'). Thanks for life, for health and strength, for eyes to see the beauty of the world, for love and friendships, for what we get from others and the opportunity to give to others, for the provisions of everyday to sustain us, for family and shelter, for blessings without number which only the blind cannot see or the proud will not see.....

Secondly, we come together to be renewed for the week ahead, to draw on God's grace freely given in his Word and Sacrament (Holy Communion), to draw strength and



not part of God's greater scheme which he purposed from the beginning and of which Jesus was and is the instigator.....



*Veni, Sancte Spiritus*

encouragement from one another, to find forgiveness and pardon, to set aside a time for quiet reflection, to review our lives and rediscover a purpose for living, to come to know God better through his Son Jesus Christ, to come empty and wait to be filled with the fullness of God through his Holy Spirit.

Thirdly, we come together to recover that bigger picture of what God would want for our community, our society, our world. Jesus called it "the Kingdom of God" in which the hungry would be fed, the poor lifted up, the downtrodden released, in which justice and peace would enrich the lives of all people. "Where there is no vision", the prophet said, "the people perish". Our own little schemes are insignificant and futile if

Finally, we come together to pray for our world as intercession is more powerful and effective in a group, praying for a world that is divided and damaged to be open to God's healing love, available to us through Jesus Christ.

**Hugh Moseley**  
**(01797 222430)**

## Services in September

Sunday 11<sup>th</sup> - 9.15 a.m.  
Holy Communion with hymns

Sunday 25<sup>th</sup> - 10.30 a.m.  
Family Service for Harvest

**All Welcome**

## AT RYE HARBOUR VILLAGE HALL

# PARENT

## NEW

## NEW

10.00 am to 12.00 Midday

**Baby  
Friendly  
Area**

**Make new friends!**


# &

**Why not come & join us?  
For refreshments, whilst your  
toddler's being busy.**


# TODDLER

**Lots of fun things to do!**


Toys

## NEW


**Health Visitor - 1st Wednesday  
Of Every Month**

For further details contact: Claire on 01797 223894

## Rye Harbour Parent and Toddler Group

The parent and toddler group has been running as normal throughout the summer and has continued to be well attended, although with Rosemary being away for most of the summer I would appreciate any offers of help to get out toys and tidy up at the end! The sessions with the Fellowship of St. Nicholas Fun Van were great fun for all who came along. The children always love the opportunity to get a bit messy with the gunge, sand, paint and other activities on offer.

Unfortunately we were unable to organise a trip to one of the 'Surestart' activity days but are looking forward to a trip to "Underwater World" on 31st August. We are hoping for some

sunshine so we can have lunch on the beach, but I'm sure we will have fun whatever the weather!

We have had three new additions to our group over the summer so congratulations to Julie and Paul on the birth of Kiki, to Charlotte and Scot on the birth of Spencer and to Lucy and Lee on the birth of Ellis.

Also best wishes and congratulations to Lucy and Lee as they are getting married on 2nd September!

The Parent and Toddler group meet every Wednesday in the village hall from 10 until 12 and all under fives,

parents and carers are welcome.

We also welcome any offers of help from other members of the community, for more details you can contact me on 223894. Look forward to seeing you there!



Don't Forget To Visit  
**RYE HARBOUR'S -Very Own**  
 Web Site At  
<http://www.ryeharbour.org>  
 Featuring The Rye Harbour Newsletter





## **Family Announcements**

### **Congratulations**



Happy 1<sup>st</sup> Birthday to Ronnie on 27<sup>th</sup> September from Mummy & Daddy, Greatgran Nanny Pat, Nanny Julie, Grandad Chris and Uncles Nick, Steven, Sean, Lee and Jamie.



### **Hospital**

My friend Garth has recently had an operation on his knee. He is up and about now, I did offer to take him to the pub by wheelchair.

Jack Caister has been in hospital, best wishes for a speedy recovery.

Reports From Nanny Pat & Julie

## **THANK YOU**

I would like to thank all the friends who sent cards or good wishes to me when I was in hospital.

**Sylvia Alford**

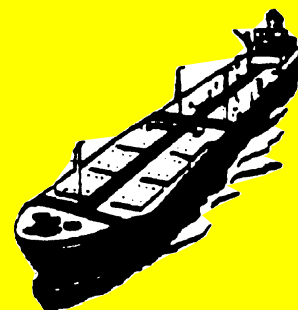
### **NEW BUS SERVICE**

New Sunday bus service with a connection both to and from Hastings via Winchelsea Beach.

Four Journeys each way, leaflets available either in the shop or on the bus shelter timetable.

### **The Ploughman's Lunches**

The next Ploughman's Lunch will be Monday 12th September



# **RASTRUM LTD**

*Shipping & Warehousing*

Industrial Units

1,000 Sq Ft To 50,000 Sq Ft

&

Quality Offices

To Let

Rye Wharf, Harbour Road, Rye,  
East Sussex TN31 7TE

**Telephone:**

**(01797) 224778**

**Fax: (01797) 223650**